



# Gatwick Airport Northern Runway Project

Environmental Statement  
Project Description Figures – Tracked Version

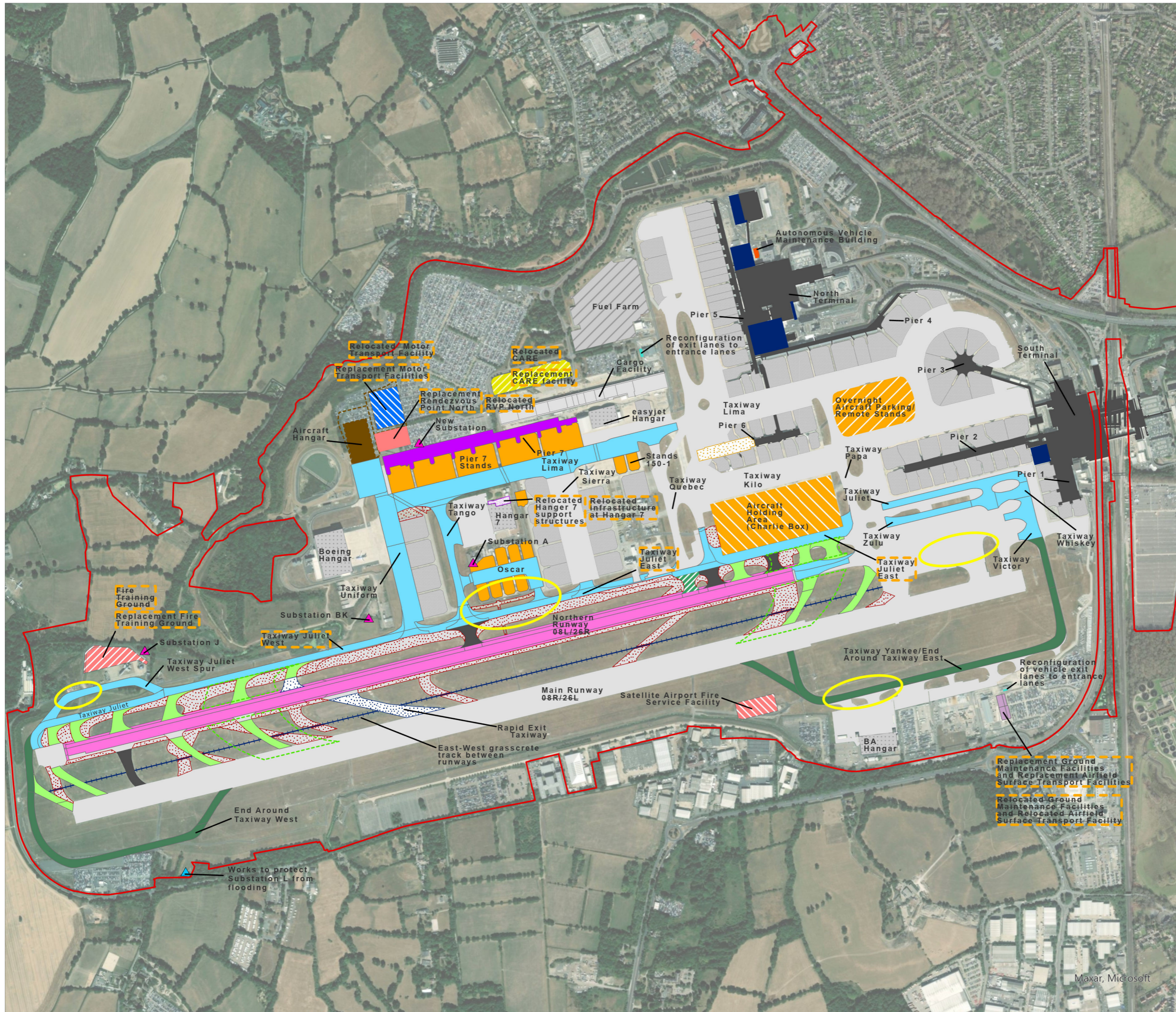
**Book 5**

VERSION: 2.0

DATE: FEBRUARY 2024

Application Document Ref: 5.2

PINS Reference Number: TR020005



- Project Site Boundary
- Existing**
- Terminal buildings
- Cargo facility buildings
- Fuel Farm
- Hangar
- Existing stands
- Existing taxiway
- Existing exit/entrance taxiway
- Future Baseline**
- Pier 6 Extension
- Rapid Exit Taxiway
- Proposed**
- Hard standing returned to grass
- Northern Runway 08L/26R- Re-positioned Northern Runway
- Taxiway-Taxiways
- Stands- Aircraft Stands
- Aircraft Holding Area
- Overnight parking- remote stands- Overnight parking / remote aircraft stands
- End Around Taxiways
- Modified exit/entrance taxiway
- Re-positioned and upgraded- exit/entrance taxiway- Exit / Entrance Taxiways
- Re-positioned and upgraded- exit/entrance taxiway envelope- Exit / Entrance Taxiways Envelope
- Terminal works
- Pier 7
- Hangar
- Reconfigured car parking areas
- Relocated- Replacement fire training ground
- Relocated Motor Transport Facility- Replacement motor transport facilities
- Revisions from version 1.0
- Relocated Ground Maintenance Facilities and Relocated Airfield Surface Transport Facility
- Replacement Ground maintenance Facilities and Replacement Airfield Surface Transport Facilities
- Relocated Central Area Recycling Enclosure (CARE)- Replacement Central Area Recycling Enclosure (CARE) facility
- Relocated Central Area Recycling Enclosure (CARE)- Replacement Central Area Recycling Enclosure (CARE) facility
- Relocated Rendezvous Point North (RVP)- Replacement Rendezvous Point North
- Satellite Airport Fire Service Facility
- Relocated infrastructure at Hangar 7- Relocated Hangar 7 support structures
- Autonomous Vehicle Maintenance Building
- Reconfiguration of vehicle exit lanes to entrance lanes
- East-West grasscrete track between runways- Runway Access Track
- Engine ground running areas
- Substation
- Works to protect Substation L from flooding

DOCUMENT

Environmental Statement

DRAWING TITLE

Proposed Airport Works  
(Version 2 Tracked Changed)

DATE

February 2024

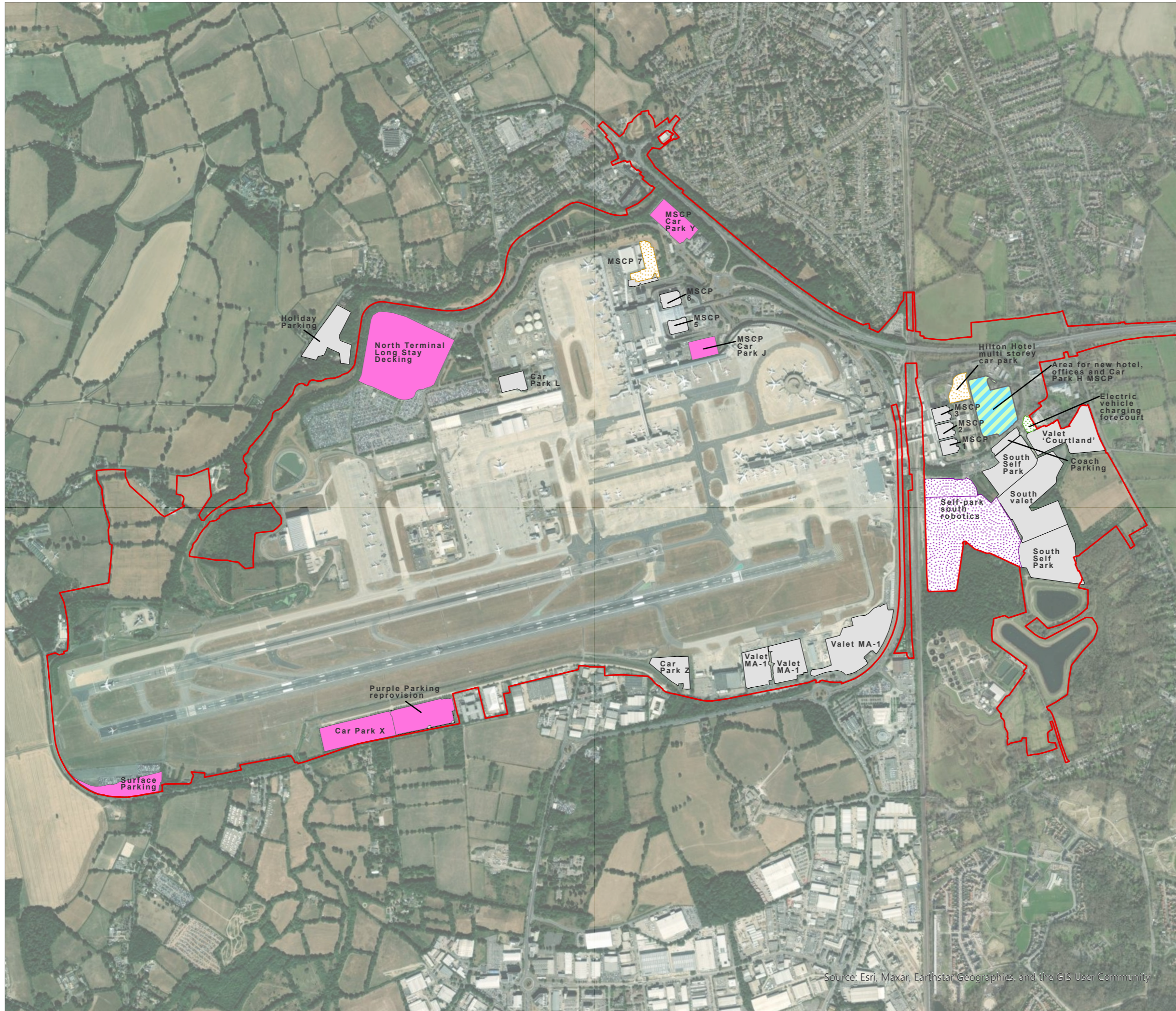
ORIENTATION 	DRAWING NO.	REVISION
	FIGURE 5.2.1a	2.0
	DRAWN BY	PM / CHECKED BY
	MS	KC

SCALE @ A3 1:12,500

Reproduced from Ordnance Survey map with the permission of Ordnance Survey on behalf of the controller of His Majesty's Stationery Office © Crown Copyright 2024. License number 0100031673, 10001998, 100048492.

© Copyright 2024 Gatwick Airport Limited. No part of this drawing is to be reproduced without prior permission of Gatwick Airport Limited.

Maxar, Microsoft



**KEY**

- Project Site Boundary
- Existing and retained**
- Gatwick Airport Car Park
- Future Baseline**
- Self-park south robotics
- Car Park
- Electric Vehicle Charging Forecourt
- Proposed**
- Area for new hotel, offices and Car Park H MSCP
- Parking

DOCUMENT  
**Environmental Statement**

DRAWING TITLE  
**Proposed Car Parks**

DATE  
**July 2023**

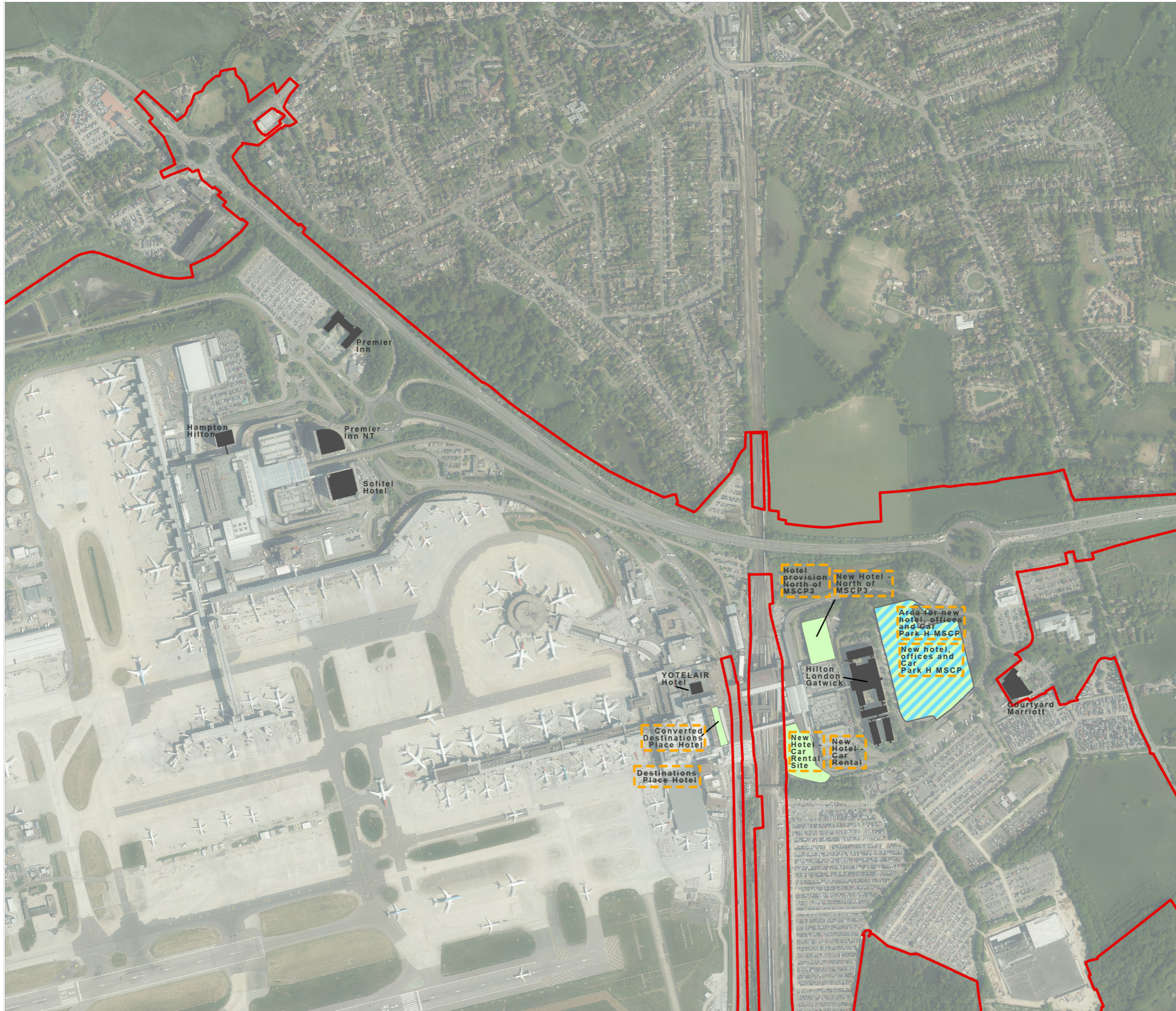
	DRAWING NO.	REVISION
	<b>FIGURE 5.2.1b</b>	<b>For ES Issue</b>
	DRAWN BY	PM / CHECKED BY
	<b>MS</b>	<b>KC</b>



Reproduced from Ordnance Survey map with the permission of Ordnance Survey on behalf of the controller of Her Majesty's Stationery Office © Crown Copyright 2023. License number 0100031673, 10001998, 100048492.

© Copyright 2023 Gatwick Airport Limited. No part of this drawing is to be reproduced without prior permission of Gatwick Airport Limited.

Source: Esri, Maxar, Earthstar Geographics, and the GIS User Community



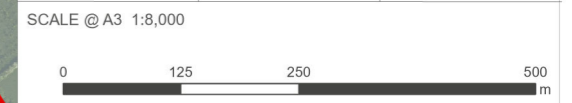
- KEY**
- Project Site Boundary
  - Existing**
  - Hotel
  - Proposed**
  - New hotel Hotel
  - Area for new hotel, offices and Car Park H MSCP
  - Revisions from version 1.0

DOCUMENT  
Environmental Statement

DRAWING TITLE  
Proposed Hotels and Commercial Elements (Version 2 Tracked Changed)

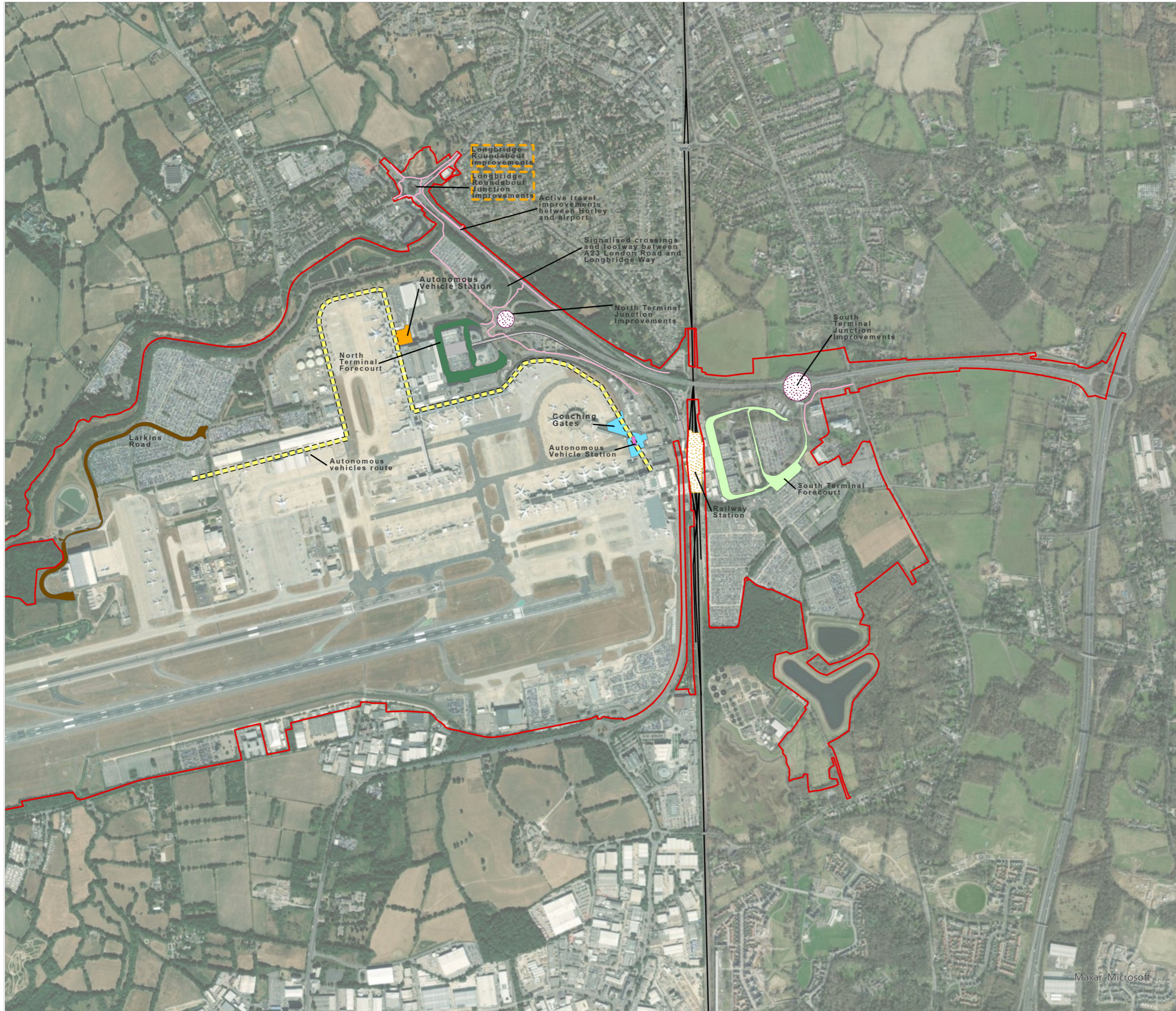
DATE  
February 2024

<b>N</b> 	DRAWING NO. FIGURE 5.2.1c	REVISION 2.0
	DRAWN BY MS	PM / CHECKED BY KC



Reproduced from Ordnance Survey map with the permission of Ordnance Survey on behalf of the controller of His Majesty's Stationery Office © Crown Copyright 2024. License number 0100031673, 10001998, 100048492.

© Copyright 2024 Gatwick Airport Limited. No part of this drawing is to be reproduced without prior permission of Gatwick Airport Limited.



**KEY**

- Project Site Boundary
- Existing**
- Inter-Terminal Transit System Stations
- Inter-Terminal Transit System track
- Future Baseline**
- Gatwick Railway Station
- Junction improvements (including signalisation)
- Proposed**
- North Terminal Forecourt
- South Terminal Forecourt
- North Terminal Autonomous Vehicle station
- South Terminal autonomous vehicles station
- Larkins Road realignment
- South Terminal Coaching Gates
- Autonomous vehicles route
- Active travel improvements
- Revisions from version 1.0

Detailed highway plans are provided in Appendix 5.2.1 of the Environmental Statement.

DOCUMENT

Environmental Statement

DRAWING TITLE

Proposed Surface Access Improvements  
(not including highways)  
(Version 2 Tracked Changed)

DATE

February 2024

ORIENTATION



DRAWING NO.

FIGURE 5.2.1d

REVISION

2.0

DRAWN BY

MS

PM / CHECKED BY

KC

SCALE @ A3 1:16,000

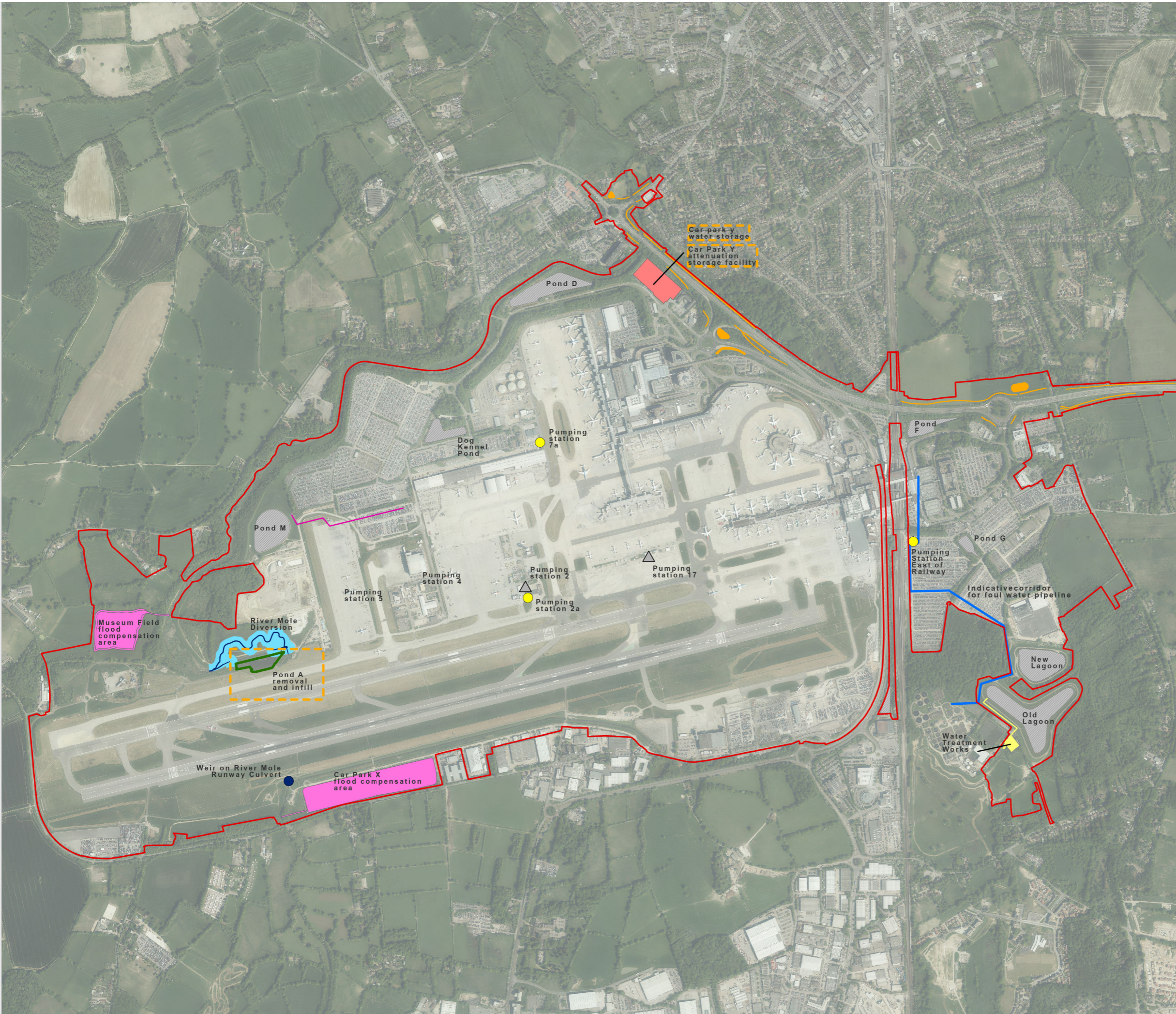


Reproduced from Ordnance Survey map with the permission of Ordnance Survey on behalf of the controller of Her Majesty's Stationery Office © Crown Copyright 2024. License number 0100031673, 10001998, 100048492.

© Copyright 2024 Gatwick Airport Limited. No part of this drawing is to be reproduced without prior permission of Gatwick Airport Limited.

**KEY**

- Project Site Boundary
- Existing**
- Artificial waterbody
- Pumping Station
- Foul water pipeline
- Proposed**
- Water storage
- Flood compensation / Storage Areas
- River Mole Diversion
- River Mole Diversion - secondary channel
- Waterbodies and ditches for the highways scheme
- Water Treatment Works
- Indicative corridor for pipeline
- Indicative corridor for foul water pipeline
- Pumping stations
- Weir on River Mole Runway Culvert
- Pond A removal and infill
- Revisions from version 1.0

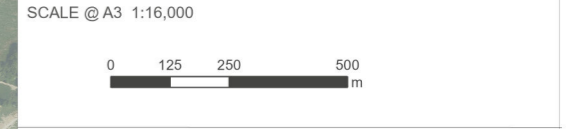


DOCUMENT  
**Environmental Statement**

DRAWING TITLE  
**Proposed Surface Water and Foul Water Improvements (Version 2 Tracked Changed)**

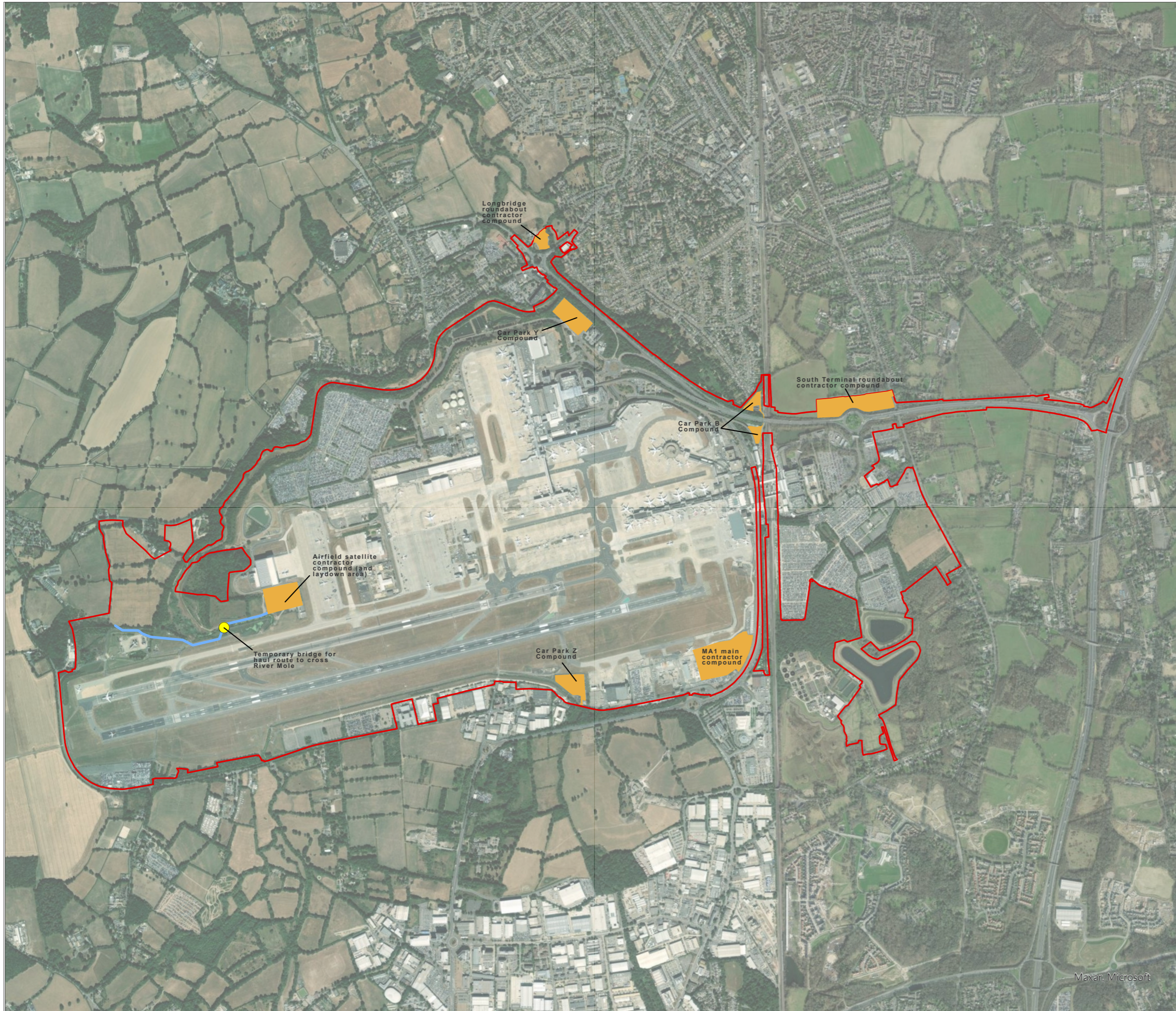
DATE  
**February 2024**

	DRAWING NO. <b>FIGURE 5.2.1e</b>	REVISION <b>2.0</b>
	DRAWN BY <b>MS</b>	PM / CHECKED BY <b>KC</b>



Reproduced from Ordnance Survey map with the permission of Ordnance Survey on behalf of the controller of Her Majesty's Stationery Office © Crown Copyright 2024. License number 0100031673, 10001998, 100048492.

© Copyright 2024 Gatwick Airport Limited. No part of this drawing is to be reproduced without prior permission of Gatwick Airport Limited.



**KEY**

- Project Site Boundary
- Temporary construction compounds
- Indicative Haul Route
- Temporary bridge

DOCUMENT  
**Environmental Statement**

DRAWING TITLE  
**Proposed Temporary Construction Compounds**

DATE  
**July 2023**

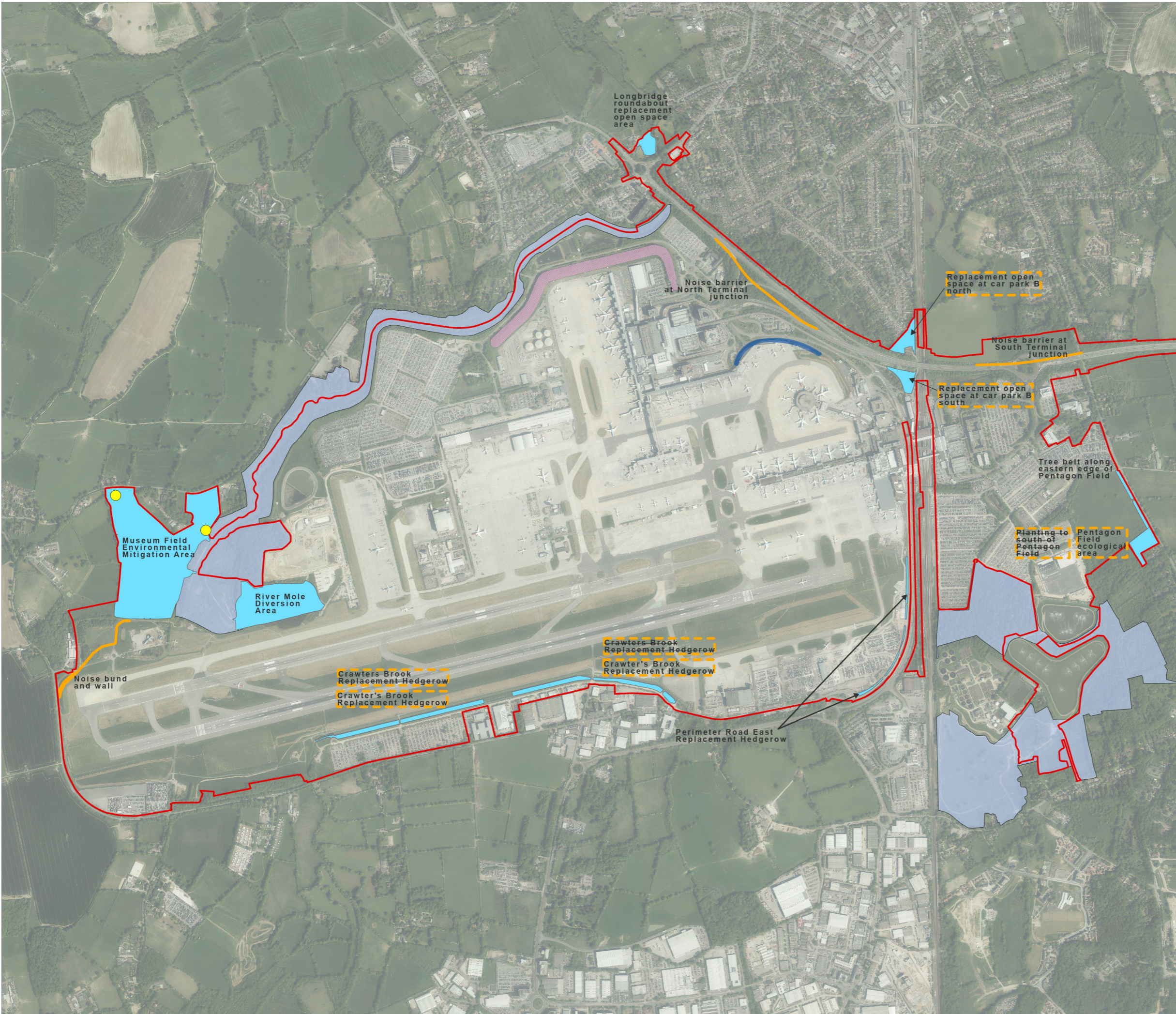
<p>ORIENTATION</p>	DRAWING NO.	REVISION
	<b>FIGURE 5.2.1f</b>	<b>For ES Issue</b>
	DRAWN BY	PM / CHECKED BY
	<b>MS</b>	<b>KC</b>

SCALE @ A3 1:19,500

Reproduced from Ordnance Survey map with the permission of Ordnance Survey on behalf of the controller of Her Majesty's Stationery Office © Crown Copyright 2023. License number 0100031673, 10001998, 100048492.

© Copyright 2023 Gatwick Airport Limited. No part of this drawing is to be reproduced without prior permission of Gatwick Airport Limited.

Maxar, Microsoft



**KEY**

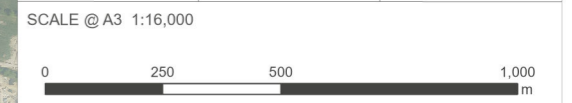
	Project Site Boundary
<b>Existing</b>	
	Gatwick Biodiversity Area
	Noise mitigation (environmental bund) - Noise bund
	Noise wall
<b>Proposed</b>	
	Environmental Mitigation Areas
	Noise Mitigation
	Farm access bridges
	Revisions from version 1.0

DOCUMENT  
**Environmental Statement**

DRAWING TITLE  
**Proposed Environmental Mitigation Areas (Version 2 Tracked Changed)**

DATE  
**February 2024**

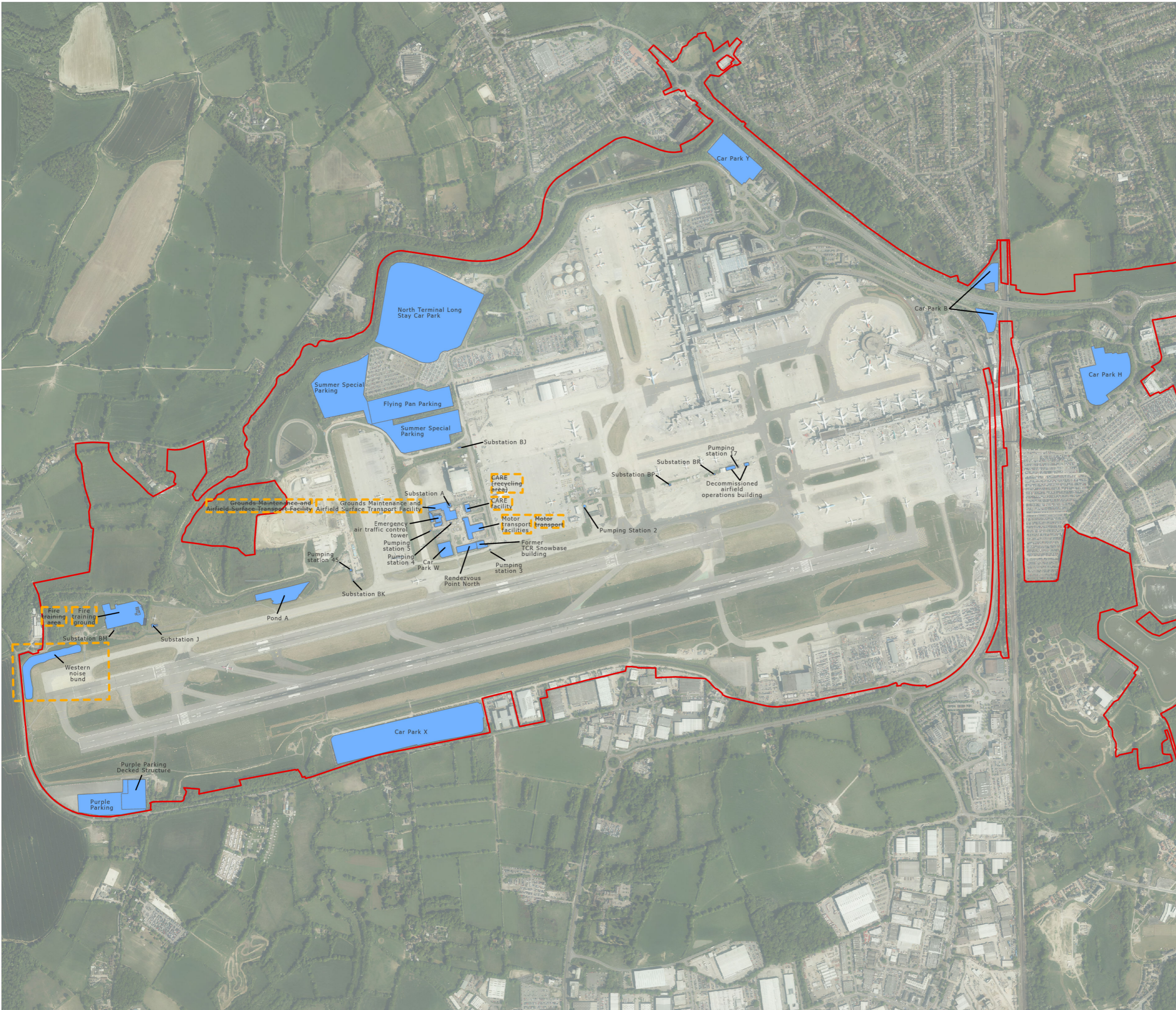
ORIENTATION 	DRAWING NO. <b>FIGURE 5.2.1g</b>	REVISION <b>2.0</b>
	DRAWN BY <b>MS</b>	PM / CHECKED BY <b>KC</b>



Reproduced from Ordnance Survey map with the permission of Ordnance Survey on behalf of the controller of Her Majesty's Stationery Office © Crown Copyright 2024. License number 0100031673, 10001998, 100048492.

© Copyright 2024 Gatwick Airport Limited. No part of this drawing is to be reproduced without prior permission of Gatwick Airport Limited.





- Project Site Boundary
- Existing facilities to be demolished/removed
- Revisions from version 1.0

DOCUMENT  
Environmental Statement

DRAWING TITLE  
Existing Facilities Proposed to be Demolished or Removed (Version 2 Tracked Changed)

DATE  
February 2024

	DRAWING NO. <b>FIGURE 5.2.1h</b>	REVISION <b>2.0</b>
	DRAWN BY <b>MS</b>	PM / CHECKED BY <b>KC</b>



Reproduced from Ordnance Survey map with the permission of Ordnance Survey on behalf of the controller of His Majesty's Stationery Office © Crown Copyright 2024. License number 0100031673, 10001998, 100048492.

© Copyright 2024 Gatwick Airport Limited. No part of this drawing is to be reproduced without prior permission of Gatwick Airport Limited.